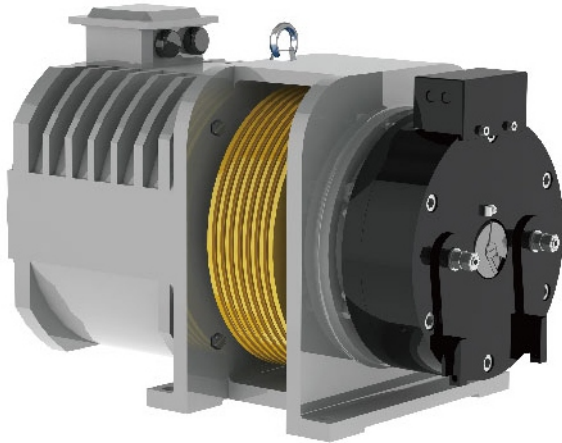
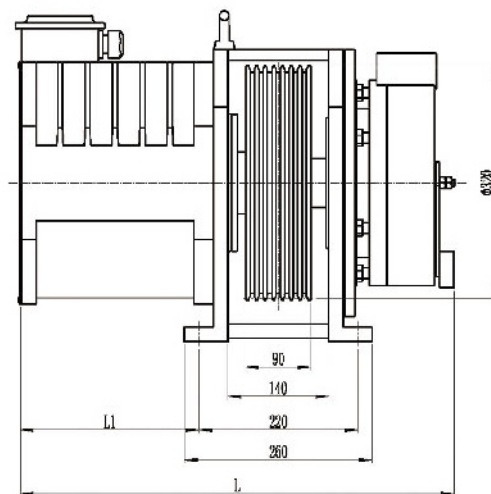
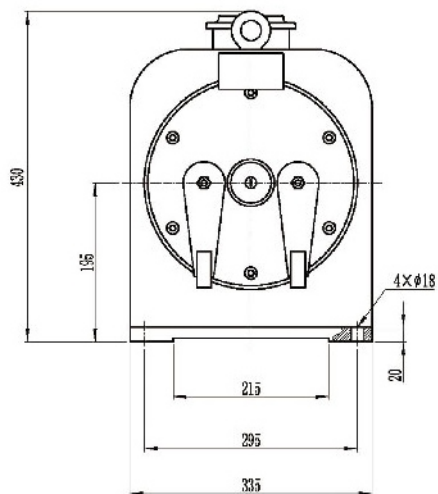


MONA320B



Voltage	380V
Roping	2:1
Wrap	Single
Elv. Load	(630~1000)kg
Elv. Speed	(0.5~1.75)m/s
Sheave Diam	320mm
Duty	S5-40%ED
Max. Static Load	3000kg
Weight	290kg
Brake	DC110V 2.6A
IP Code	IP41
Ins. Class	F

Dimensions



Permanent Magnet Synchronous
Gearless Traction Machine

Spec. Sheet

Type	Spec	Elv Load	Elv Speed	Sheave Dia	Sheave Groove	Current	Power	Speed	Freq	Torque	Poles	L1	L2	Undercut Angle
		kg	m/s	mm		A	kW	r/min	Hz	N·m		mm	mm	°
MONA320B	630-0.5B	630	0.5	320	5×Φ8×12	7	2.1	60	12.0	340	24	605	250	90
MONA320B	630-0.63B	630	0.63	320	5×Φ8×12	7	2.7	75	15.0	340	24	605	250	
MONA320B	630-1.0B	630	1.0	320	5×Φ8×12	10	4.2	119	23.8	340	24	605	250	
MONA320B	630-1.5B	630	1.5	320	5×Φ8×12	16	6.4	179	35.8	340	24	605	250	
MONA320B	630-1.6B	630	1.6	320	5×Φ8×12	16	6.8	191	38.2	340	24	605	250	
MONA320B	630-1.75B	630	1.75	320	5×Φ8×12	16	7.4	209	41.8	340	24	605	250	
MONA320B	800-0.5B	800	0.5	320	6×Φ8×12	9	2.7	60	12.0	430	24	605	250	
MONA320B	800-0.63B	800	0.63	320	6×Φ8×12	9	3.4	75	15.0	430	24	605	250	
MONA320B	800-1.0B	800	1.0	320	6×Φ8×12	13	5.4	119	23.8	430	24	605	250	
MONA320B	800-1.5B	800	1.5	320	6×Φ8×12	20	8.1	179	35.8	430	24	605	250	
MONA320B	800-1.6B	800	1.6	320	6×Φ8×12	20	8.6	191	38.2	430	24	605	250	
MONA320B	800-1.75B	800	1.75	320	6×Φ8×12	20	9.4	209	41.8	430	24	605	250	
MONA320B	1000-0.5B	1000	0.5	320	7×Φ8×12	11	3.4	60	12.0	540	24	645	290	85
MONA320B	1000-0.63B	1000	0.63	320	7×Φ8×12	11	4.2	75	15.0	540	24	645	290	
MONA320B	1000-1.0B	1000	1.0	320	7×Φ8×12	16	6.7	119	23.8	540	24	645	290	
MONA320B	1000-1.5B	1000	1.5	320	7×Φ8×12	25	10.1	179	35.8	540	24	645	290	
MONA320B	1000-1.6B	1000	1.6	320	7×Φ8×12	25	10.8	191	38.2	540	24	645	290	
MONA320B	1000-1.75B	1000	1.75	320	7×Φ8×12	25	11.8	209	41.8	540	24	645	290	

Remark:

1. This model is used for machine roomless elevator.
2. The above value of undercut angle is recommended based on regular standard.
It's optional according to practical condition.

