



BMS系列摆线液压马达 BMS SERIES HYDRAULIC MOTOR

BMS系列摆线液压马达是一种先进的平面配流结构液压马达，该系列马达使用镶柱式转定子付，具有工作压力高，工作效率高，整机高效保持性好，工作寿命长的特点。可在标准结构的基础上根据用户需求进行多功能的变型设计。其特点：

- *采用先进的转定子参数设计，启动压力低，效率高并保持性好。
- *工作压力高，输出扭矩大。采用圆锥滚子轴承结构，承受轴、径向负荷能力强，使马达可直接驱动工作机构，使用范围扩大。
- *先进端面配流结构，使马达配流精度高，磨损后自动补偿能力强，确保高的容积效率、马达长寿命，确保马达转速平稳、负载速度特性平稳。
- *能够驱动更大的负载，工作压力等级更高。

BMS series motor adapt the advanced Geroler gear set designed with disc distribution flow and high pressure. The unit can be supplied the individual variant in operating multifunction in accordance with requirement of applications.

Characteristic features:

- * Advanced manufacturing devices for the Geroler gear set, which use low pressure of start-up, provide smooth and reliable operation and high efficiency.
- * The output shaft adapts in tapered roller bearings that permit high axial and radial forces. The case can offers capacities of high pressure and high torque in the wide of applications.
- * Advanced design in disc distribution now. which can automatically compensate in operating with high volume efficiency and long life , provide smooth and reliable operation.
- * The series motor is suitable for vehicles with greater loads and pressure drop.

主要技术参数Main Specification

类型Type		BMS 80	BMS 100	BMS 125	BMS 160	BMS 200	BMS 250	BMS 315	BMS 400	BMS 475
排量Geometric displacement (cm ³ /rev.)		80.6	100.8	125	154	194	243	311	394	475
最高转速 Max.speed (rpm)	额定rated	675	540	432	337	270	216	171	135	110
	连续cont.	800	748	600	470	375	300	240	185	155
	断续int.	988	900	720	560	450	360	280	225	185
最大扭矩 Max.torque (N*m)	额定rated	175	220	273	445	505	620	700	765	780
	连续cont.	225	290	365	485	586	708	880	880	910
	断续int.	305	390	480	590	705	860	1000	980	990
最大输出功率 Max.output (Kw)	额定rated	12	12.4	12.4	12.4	12.4	12.4	11.2	9.6	8.6
	连续cont.	16	18	18	18.1	18.1	18	17	11	9
	断续int.	20	22	23	25	24	23.8	20.2	12	11
最高工作压差 Max.pressure drop (Mpa)	额定rated	16	16	16	19	19	18	16	14	12
	连续cont.	20.5	20.5	20.5	21	21	20	20	16	14
	断续int.	27.5	27.5	27.5	26	25	25	24	19	15
	峰值peak	29.5	29.5	29.5	28	27	27	26	21	17.5
最大流量 Max.flow (L/min)	连续cont.	65	75	75	75	75	75	75	75	75
	断续int.	80	90	90	90	90	90	90	90	90
最高进油压力 Max.inlet pressure (L/min)	额定rated	21	21	21	21	21	21	21	21	21
	连续cont.	25	25	25	25	25	25	25	25	25
	断续int.	30	30	30	30	30	30	30	30	30
重量Weight (kg)		9.8	10	10.3	10.7	11.1	11.6	12.3	13.2	14.3

*额定转速、扭矩是指在额定流量、压力下的输出值。

*连续值是指该排量马达可以连续工作的最大值。

*断续值是指该排量马达在1分钟内工作6秒的最大值。

*峰值是指该排量马达在1分钟内工作0.6秒的最大值。

* Continuous pressure :Max. value of operating motor continuously.

* Intermittent pressure :Max. value of operating motor in 6 seconds per minute.

* Peak pressure:Max. value of operating motor in 0.6 second per minute.

性能参数 Performance Data

BMS 80[80.6cm³/rev.]

		压力 Pressure (Mpa)						
		3.5	7	10.5	14	17.5	20.5	22.5
流量 Flow (L/min)	15	35	80	120	158	195	228	249
	30	180	174	168	164	158	151	143
连续最大 Max.cont	30	35	80	120	158	195	232	260
	40	362	352	346	338	330	322	310
断续最大 Max.int	40	35	79	119	155	193	227	250
	50	487	480	468	457	446	438	425
连续最大 Max.cont	50	30	77	117	153	192	224	248
	60	612	603	592	581	572	558	542
断续最大 Max.int	60	28	77	117	153	192	224	243
	65	735	726	718	703	687	673	646
连续最大 Max.cont	65	26	75	116	151	188	217	236
	80	794	786	773	760	744	722	706
断续最大 Max.int	80	24	72	109	142	176	206	227
	90	981	968	955	925	893	870	832

BMS 100[100.8cm³/rev.]

		压力 Pressure (Mpa)						
		3.5	7	10.5	14	17.5	20.5	22.5
流量 Flow (L/min)	15	48	95	150	200	250	282	310
	30	146	144	139	135	130	120	105
连续最大 Max.cont	30	45	94	146	198	250	290	317
	40	291	289	278	274	269	258	242
断续最大 Max.int	40	43	89	142	196	248	288	316
	50	387	384	374	359	350	335	320
连续最大 Max.cont	50	40	88	135	194	247	286	315
	60	486	483	473	462	450	430	420
断续最大 Max.int	60	37	88	132	185	244	283	312
	75	588	584	574	562	550	538	520
连续最大 Max.cont	75	35	80	130	180	240	279	310
	90	740	735	720	705	696	676	653
断续最大 Max.int	90	30	75	124	170	236	271	303
	90	850	840	810	787	770	750	747

BMS 125[100.8cm³/rev.]

		压力 Pressure (Mpa)						
		3.5	7	10.5	14	17.5	20.5	22.5
流量 Flow (L/min)	15	55	120	176	245	309	345	375
	30	115	113	110	104	98	90	84
连续最大 Max.cont	30	55	120	175	250	315	364	404
	40	231	228	223	214	202	188	172
断续最大 Max.int	40	53	118	178	250	315	364	403
	50	312	309	290	289	278	262	235
连续最大 Max.cont	50	50	115	176	248	315	362	397
	60	391	386	378	365	352	339	308
断续最大 Max.int	60	45	113	171	241	308	358	397
	75	469	461	450	437	425	400	372
连续最大 Max.cont	75	45	110	167	240	306	352	389
	90	588	574	560	544	526	505	481
断续最大 Max.int	90	40	105	162	237	301	343	378
	90	710	696	680	661	646	628	610

BMS 160[154cm³/rev.]

		压力 Pressure (Mpa)						
		3.5	7	10.5	14	17.5	21	22.5
流量 Flow (L/min)	15	70	142	215	298	372	435	476
	30	93	91	89	85	80	76	58
连续最大 Max.cont	30	73	151	225	312	382	456	492
	40	189	187	181	176	170	162	153
断续最大 Max.int	40	75	152	228	314	383	454	488
	50	252	250	246	239	234	228	212
连续最大 Max.cont	50	70	148	225	305	372	445	480
	60	313	310	306	298	293	285	272
断续最大 Max.int	60	68	143	218	296	370	442	480
	75	378	376	370	362	353	346	332
连续最大 Max.cont	75	62	140	211	291	365	439	475
	90	475	469	461	450	441	432	414
断续最大 Max.int	90	59	131	202	286	357	425	460
	90	567	561	554	543	532	520	509

扭矩 Torque (N·m) 673
转速 Speed (rpm) 166

连续 cont.
断续 int.



性能参数 Performance Data

BMS 200[194cm³/rev.]

		压力 Pressure (Mpa)						连续最大 Max.cont	断续最大 Max.int
		3.5	7	10.5	14	17.5	21	22.5	
流量 Flow (L/min)	15	87	179	273	371	471	562	610	
		74	73	71	68	64	60	48	
	30	91	190	288	386	489	572	618	
		150	148	143	140	134	128	119	
	40	94	193	296	394	498	584	645	
		198	195	192	188	183	178	167	
	50	90	191	292	389	493	580	634	
		248	246	241	236	230	223	212	
	60	85	185	279	382	483	575	622	
		300	295	288	281	273	263	251	
连续最大 Max.cont	75	78	176	271	370	472	561	610	
		374	370	364	360	352	340	331	
断续最大 Max.int	90	68	163	265	361	456	545	599	
		443	440	435	428	424	413	400	

BMS 250[243cm³/rev.]

		压力 Pressure (Mpa)							连续最大 Max.cont	断续最大 Max.int
		3.5	7	10.5	14	17.5	20	22.5		
流量 Flow (L/min)	15	110	231	351	462	585	681	778		
		59	58	56	53	50	46	35		
	30	116	236	359	475	597	700	790		
		119	117	114	108	102	92	80		
	40	118	241	363	480	599	706	796		
		162	159	156	150	143	134	121		
	50	111	234	352	472	591	693	788		
		203	201	197	191	182	173	158		
	60	106	224	345	462	582	685	772		
		244	242	237	230	220	208	194		
连续最大 Max.cont	75	101	214	340	454	570	670	760		
		303	299	294	285	272	260	244		
断续最大 Max.int	90	93	209	335	447	559	657	749		
		363	359	354	348	340	328	303		

BMS 315[311cm³/rev.]

		压力 Pressure (Mpa)						连续最大 Max.cont	断续最大 Max.int
		3.5	7	10.5	14	17.5	20	22.5	
流量 Flow (L/min)	15	148	304	456	613	762	879	978	
		48	47	45	43	41	39	27	
	30	155	314	465	635	778	884	988	
		95	93	91	89	86	82	67	
	40	160	321	479	650	796	906	997	
		127	125	121	117	115	109	91	
	50	155	314	465	638	780	886	988	
		159	157	153	149	145	142	128	
	60	151	306	453	620	765	886	976	
		187	185	181	176	169	157	143	
连续最大 Max.cont	75	146	300	445	613	755	875	966	
		238	236	232	227	224	220	196	
断续最大 Max.int	90	135	284	436	601	740	863	952	
		286	283	278	272	265	257	232	

BMS 400[394cm³/rev.]

		压力 Pressure (Mpa)						连续最大 Max.cont	断续最大 Max.int
		3.5	7	10.5	14	16	17.5		
流量 Flow (L/min)	15	186	379	578	779	896	986		
		37	36	35	33	31	29		
	30	190	388	590	791	905	991		
		75	73	71	68	65	61		
	40	195	394	596	797	912	998		
		99	97	95	93	90	85		
	50	191	388	587	785	904	983		
		125	123	118	114	109	102		
	60	186	388	587	785	904	983		
		149	146	142	137	131	122		
连续最大 Max.cont	75	181	372	576	770	891	973		
		187	183	177	171	164	153		
断续最大 Max.int	90	176	367	571	766	883	965		
		226	221	214	208	199	183		

BMS 475[475cm³/rev.]

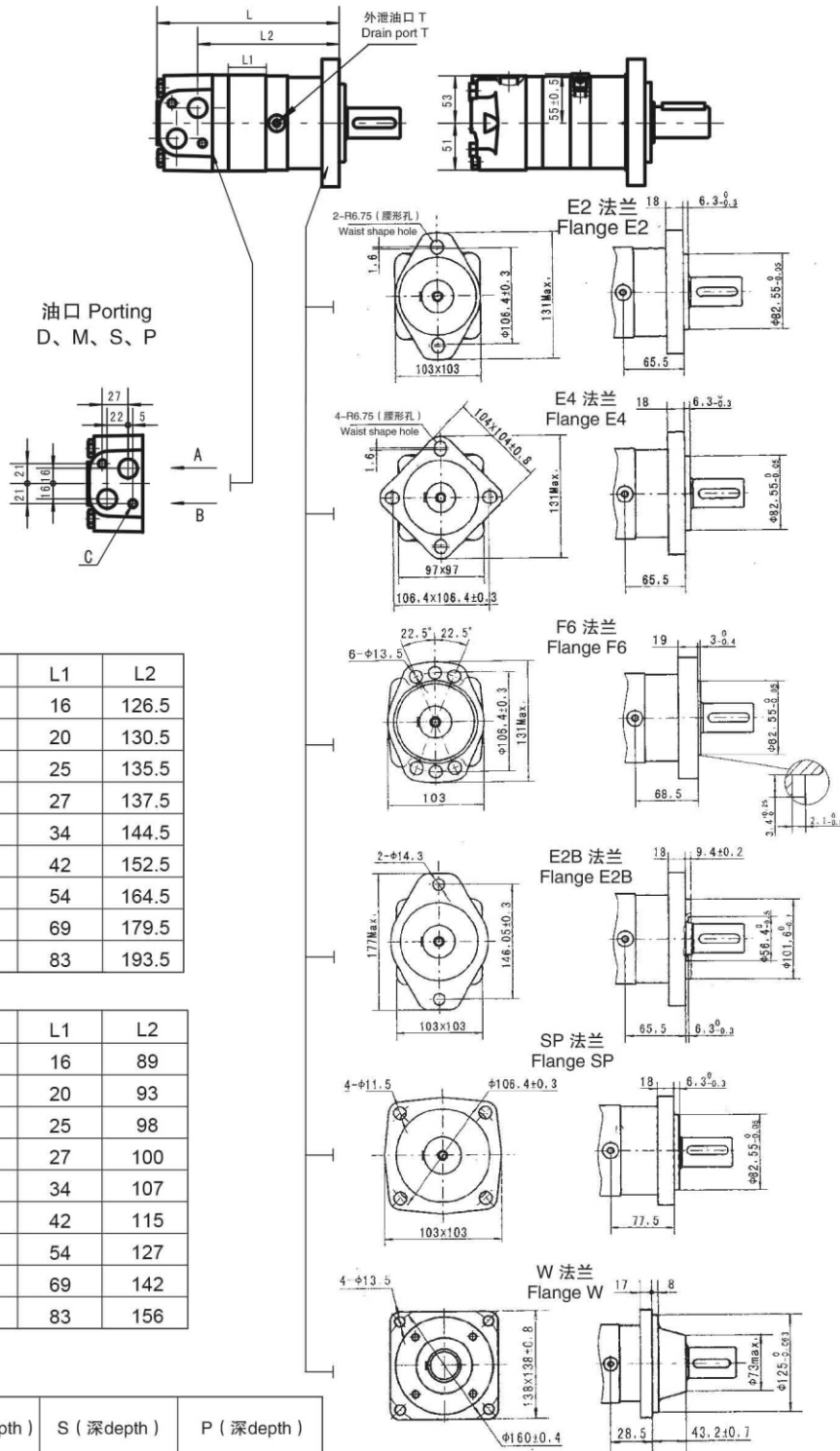
		压力 Pressure (Mpa)					连续最大 Max.cont	断续最大 Max.int
		3.5	7	10.5	14	15		
流量 Flow (L/min)	15	218	439	661	892	995		
		30	29	28	27	25		
	30	223	450	676	910	1002		
		61	60	58	56	53		
	40	228	461	689	927	1017		
		82	80	77	74	68		
	50	224	456	682	920	1008		
		103	101	97	92	86		
	60	220	451	677	913	998		
		123	121	118	112	105		
连续最大 Max.cont	75	212	443	664	901	980		
		155	153	147	140	132		
断续最大 Max.int	90	196	421	643	877	959		
		186	184	178	170	157		

扭矩 Torque (N·m) 673
转速 Speed (rpm) 166

连续 cont.
断续 int.

BMS 摆线液压马达

BMS DIMENSIONS AND MOUNTING DATA



型号 Model	L	L1	L2
BMS-80	170	16	126.5
BMS-100	174	20	130.5
BMS-125	179	25	135.5
BMS-160	181	27	137.5
BMS-200	188	34	144.5
BMS-250	196	42	152.5
BMS-315	208	54	164.5
BMS-400	223	69	179.5
BMS-475	237	83	193.5

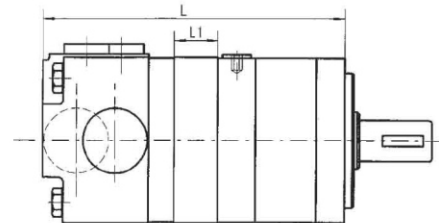
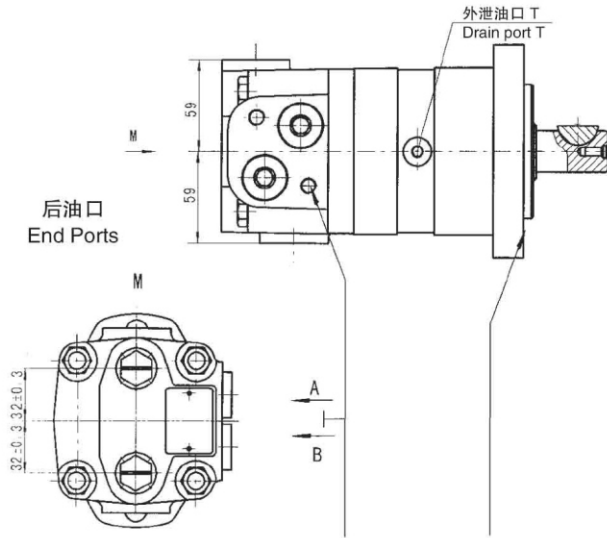
型号 Model	L	L1	L2
BMS-80-W	132.5	16	89
BMS-100-W	136.5	20	93
BMS-125-W	141.5	25	98
BMS-160-W	143.5	27	100
BMS-200-W	150.5	34	107
BMS-250-W	158.5	42	115
BMS-315-W	170.5	54	127
BMS-400-W	185.5	69	142
BMS-475-W	199.5	83	156

代号 Code 连接形式 Mounting	D (深depth)	M (深depth)	S (深depth)	P (深depth)
P(A,B)	G1/2(15)	M22x1.5(15)	7/8-14 O-ring (17)	1/2-14NPTF (15)
T	G1/4(12)	M14x1.5(12)	7/16-20UNF(12)	7/16-20UNF(12)
C	2-M10(13)	2-M10 (13)	2-3/8-16UNC (13)	2-3/8-16UNC (13)



BMS 摆线液压马达

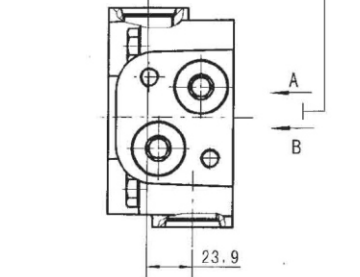
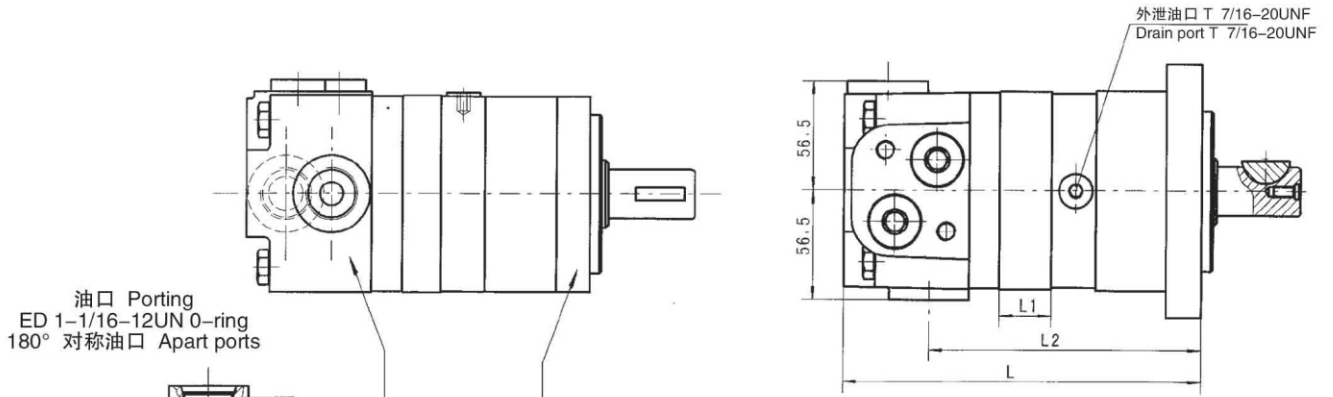
BMS DIMENSIONS AND MOUNTING DATA



后油口 P (A/B)
End Ports P (A/B)

型号 Model	L	L1	型号 Model	L	L1
BMS-80	176	16	BMS-80-WE	148	16
BMS-100	180	20	BMS-100-WE	152	20
BMS-125	185	25	BMS-125-WE	157	25
BMS-160	187	27	BMS-160-WE	159	27
BMS-200	194	34	BMS-200-WE	166	34
BMS-250	202	42	BMS-250-WE	174	42
BMS-315	214	54	BMS-315-WE	186	54
BMS-400	229	69	BMS-400-WE	201	69
BMS-475	243	83	BMS-475-WE	215	83

代号 Code	EE-D (深depth)	EE-M2 (深depth)	EE-S2 (深depth)
连接形式 Mounting	EE-D (深depth)	EE-M2 (深depth)	EE-S2 (深depth)
P(A,B)	G1/2 (15)	M22 x 1.5 (15)	7/8-14 O-ring (17)
T	G1/4 (12)	M14 x 1.5 (12)	7/16-20UNF(12)



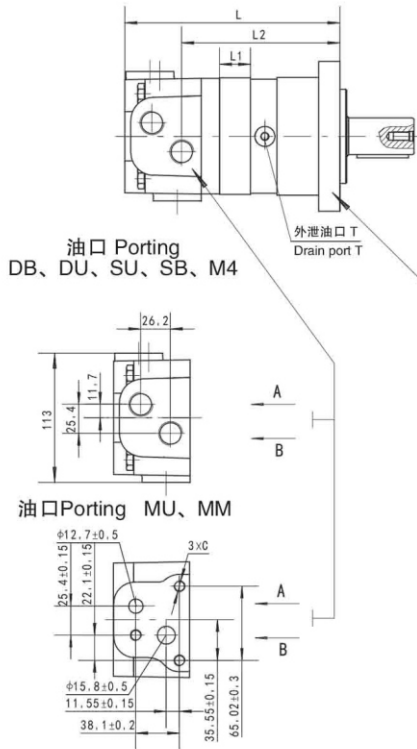
代号 Code	ED (深depth)
连接形式 Mounting	ED (深depth)
P(A,B)	1-1/16-12UN O-Ring (18)
T	7/16-20UNF (12)

型号 Model	L	L1	L2
BMS-80	176	16	130
BMS-100	180	20	134
BMS-125	185	25	139
BMS-160	187	27	141
BMS-200	194	34	148
BMS-250	202	42	156
BMS-315	214	54	168
BMS-400	229	69	183
BMS-475	243	83	197

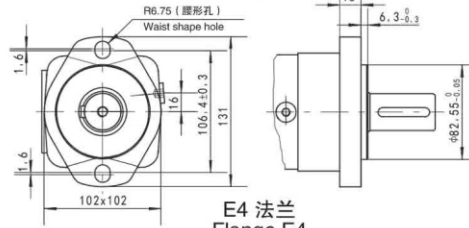
型号 Model	L	L1	L2
BMS-80-WE	148	16	102
BMS-100-WE	152	20	106
BMS-125-WE	157	25	111
BMS-160-WE	159	27	113
BMS-200-WE	166	34	119
BMS-250-WE	178	42	127
BMS-315-WE	190	54	139
BMS-400-WE	205	69	154
BMS-475-WE	219	83	168

BMS 安装连接尺寸

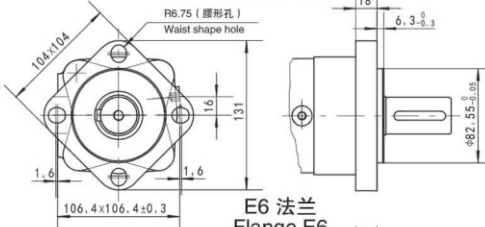
BMS DIMENSIONS AND MOUNTING DATA



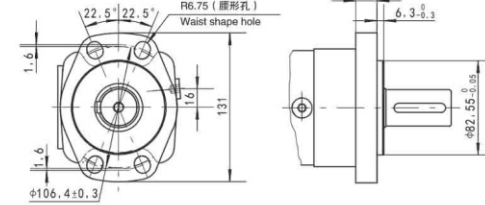
E2 法兰
Flange E2



E4 法兰
Flange E4



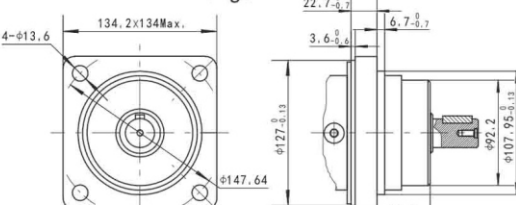
E6 法兰
Flange E6



E2B 法兰
Flange E2B



WE 法兰
Flange WE



型号 Model	L	L1	L2
BMS-80	177	16	126.5
BMS-100	181	20	130.5
BMS-125	186	25	135.5
BMS-160	188	27	137.5
BMS-200	195	34	144.5
BMS-250	203	42	152.5
BMS-315	215	54	164.5
BMS-400	230	69	179.5
BMS-475	244	83	193.5

型号 Model	L	L1	L2
BMS-80-WE	148.5	16	98
BMS-100-WE	152.5	20	102
BMS-125-WE	157.5	25	107
BMS-160-WE	159.5	27	109
BMS-200-WE	166.5	34	116
BMS-250-WE	174.5	42	124
BMS-315-WE	186.5	54	136
BMS-400-WE	201.5	69	151
BMS-475-WE	215.5	83	165

代号 Code	DB (深depth)	DU (深depth)	SU7 (深depth)	SB (深depth)	M4 (深depth)	MU	MM
P(A,B)	G1/2(15)	G1/2(15)	7/8-14O-ring(17)	7/8-14O-ring(17)	M22X1.5(15)	∅12.7,∅15.8	∅12.7,∅15.8
T	G1/4(12)	7/16-20UNF(12)	7/16-20UNF(12)	G1/4(12)	M12X1.5(12)	7/16-20UNF(12)	G1/4(12)
C						3/8-16UNC	M10



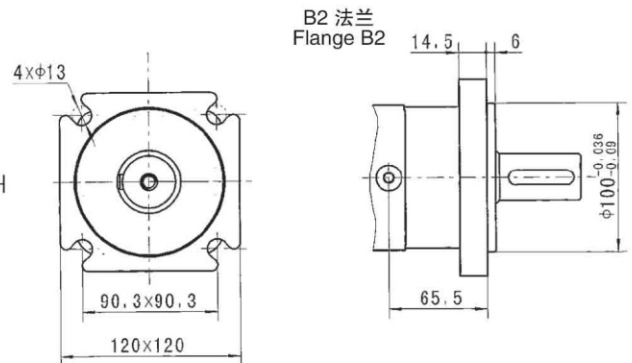
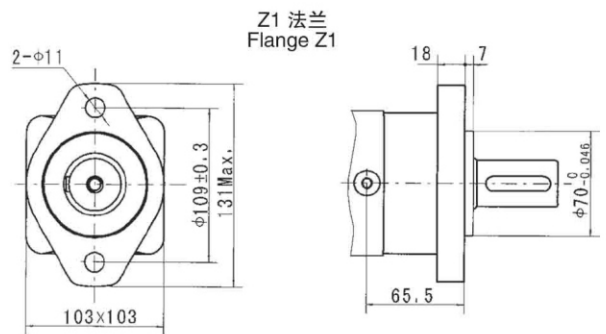
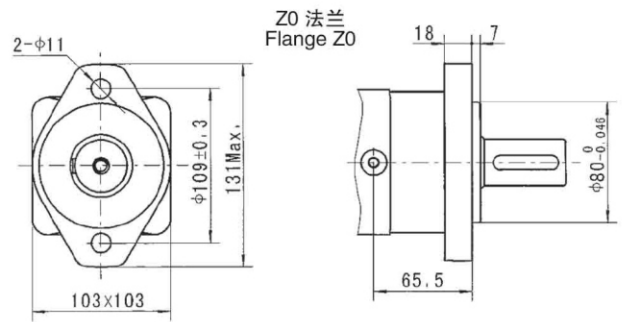
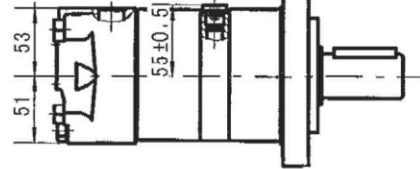
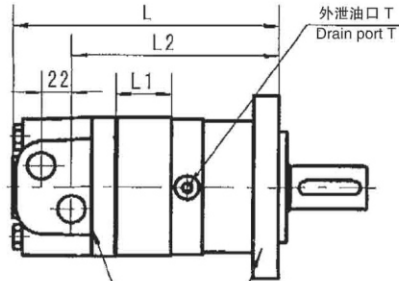
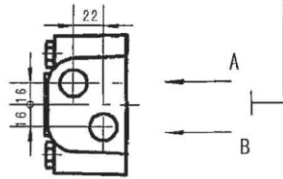


BMS 安装连接尺寸

BMS DIMENSIONS AND MOUNTING DATA

BMS

外泄油口 G2、M3、S1
Drain port G2、M3、S1

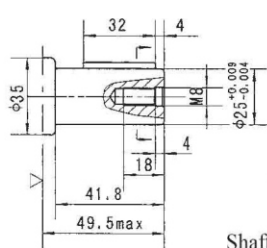


型号 Model	L	L1	L2
BMS-80	170	16	126.5
BMS-100	174	20	130.5
BMS-125	179	25	135.5
BMS-160	181	27	137.5
BMS-200	188	34	144.5
BMS-250	196	42	152.5
BMS-315	208	54	164.5
BMS-400	223	69	179.5
BMS-475	237	83	193.5

代号 Code	G2 (深 depth)	M3 (深 depth)	S1 (深 depth)
连接形式 Mounting	G2 (深 depth)	M3 (深 depth)	S1 (深 depth)
P(A,B)	G1/2(15)	M22x1.5(15)	7/8-14O-ring(17)
T	M10 x 1(9)	M10 x 1(9)	M10 x 1(9)

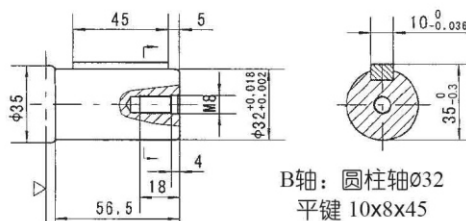
BMS 轴伸连接尺寸

SHAFT EXTENSIONS FOR BMS MOTORS



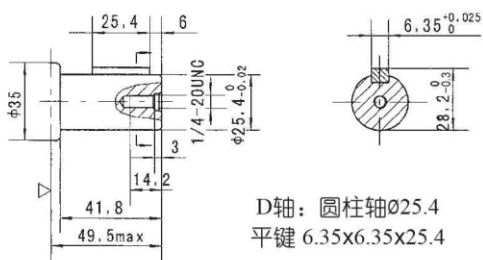
A轴: 圆柱轴 $\phi 25$
平键 8x7x32

Shaft A: Cylindrical shaft $\phi 25$
Parallel key 8x7x32



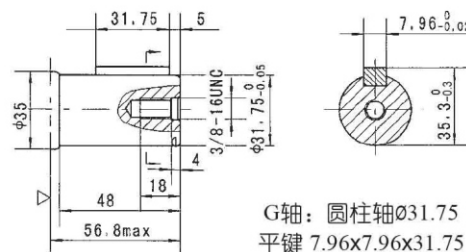
B轴: 圆柱轴 $\phi 32$
平键 10x8x45

Shaft B: Cylindrical shaft $\phi 32$
Parallel key 10x8x45



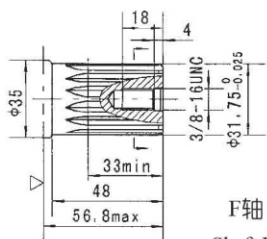
D轴: 圆柱轴 $\phi 25.4$
平键 6.35x6.35x25.4

Shaft D: Cylindrical shaft $\phi 25.4$
Parallel key 6.35x6.35x25.4

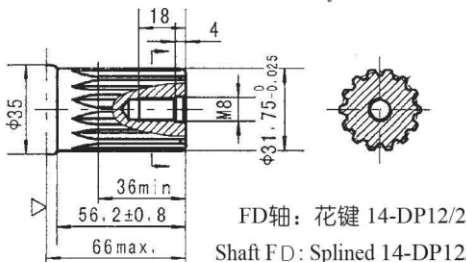


G轴: 圆柱轴 $\phi 31.75$
平键 7.96x7.96x31.75

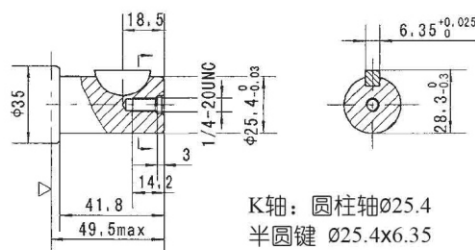
Shaft G: Cylindrical shaft $\phi 31.75$
Parallel key 7.96x7.96x31.75



F轴: 花键 14-DP12/24
Shaft F: Splined 14-DP12/24

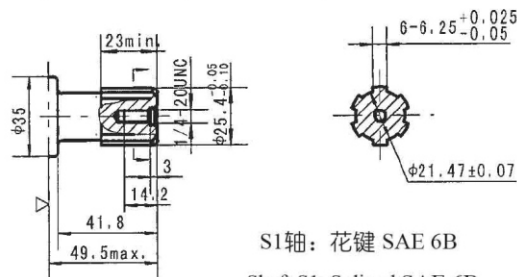


FD轴: 花键 14-DP12/24
Shaft FD: Splined 14-DP12/24



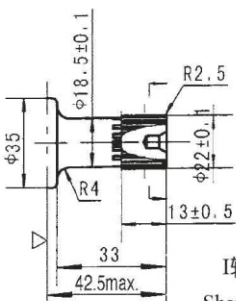
K轴: 圆柱轴 $\phi 25.4$
半圆键 $\phi 25.4 \times 6.35$

Shaft K: Cylindrical shaft $\phi 25.4$
Woodruff key $\phi 25.4 \times 6.35$



S1轴: 花键 SAE 6B

Shaft S1: Splined SAE 6B



I轴: 花键 13-DP16/32

Shaft I: Splined 13-DP16/32

▷ 马达安装面 (对应于E2法兰, 其他方式类推)

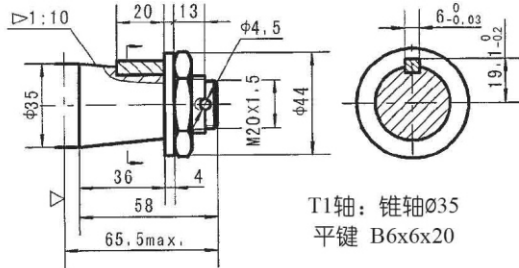
Motor Mounting Surface (Dimension corresponding mounting E2, by analogy with others)





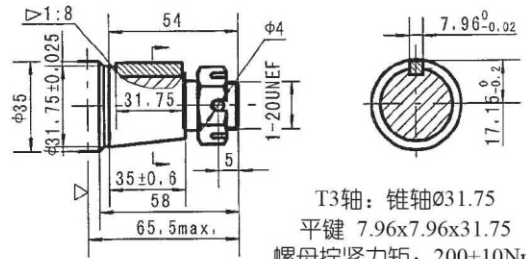
BMS 轴伸连接尺寸

SHAFT EXTENSIONS FOR BMS MOTORS



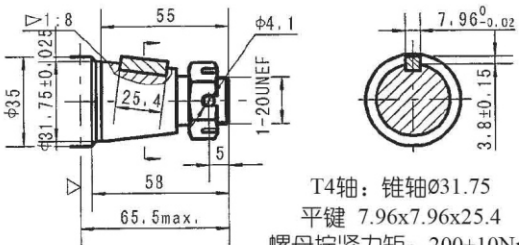
T1轴: 锥轴 $\phi 35$
平键 B6x6x20

Shaft T1: Cone-shaft $\phi 35$
Parallel key B6x6x20



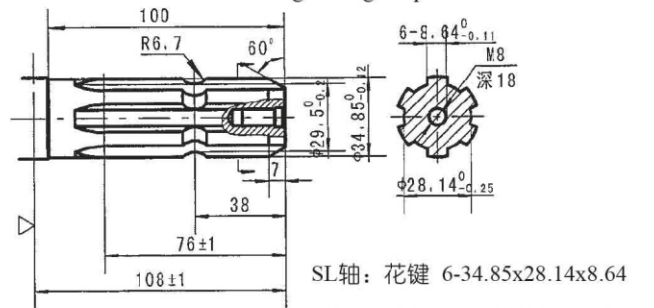
T3轴: 锥轴 $\phi 31.75$
平键 7.96x7.96x31.75
螺母拧紧力矩: 200±10Nm

Shaft T3: Cone-shaft $\phi 31.75$
Parallel key 7.96x7.96x31.75
Tightening torque: 200±10Nm

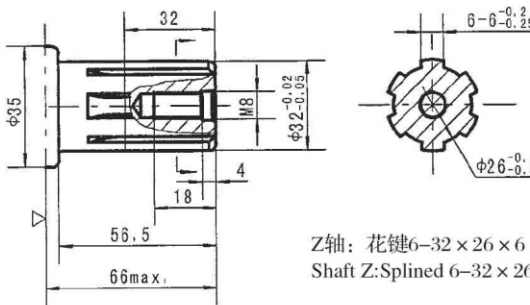


T4轴: 锥轴 $\phi 31.75$
平键 7.96x7.96x25.4
螺母拧紧力矩: 200±10Nm

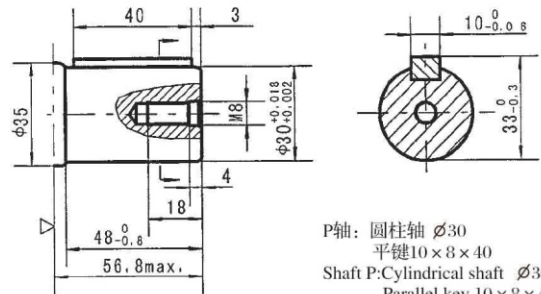
Shaft T4: Cone-shaft $\phi 31.75$
Parallel key 7.96x7.96x25.4
Tightening torque: 200±10Nm



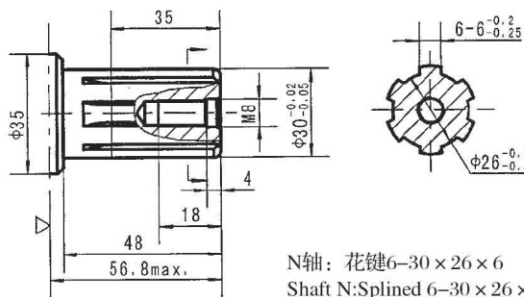
SL轴: 花键 6-34.85x28.14x8.64
Shaft SL: Splined 6-34.85x28.14x8.64



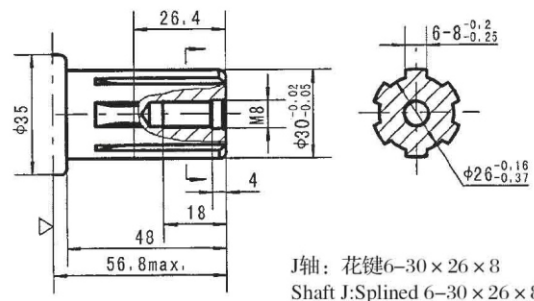
Z轴: 花键6-32×26×6
Shaft Z: Splined 6-32×26×6



P轴: 圆柱轴 $\phi 30$
平键 10×8×40
Shaft P: Cylindrical shaft $\phi 30$
Parallel key 10×8×40



N轴: 花键6-30×26×6
Shaft N: Splined 6-30×26×6



J轴: 花键6-30×26×8
Shaft J: Splined 6-30×26×8

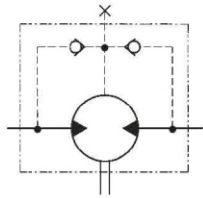
- ▷ 马达安装面 (对应于E2法兰, 其他方式类推) 注: 其中SP法兰可配轴型T1、D、B、F、G
Motor Mounting Surface (Dimension corresponding mounting E2, by analogy with others)
Note: Mounting SP is the same with shaft modle T1、D、B、F and G.

BMS 系列摆线液压马达

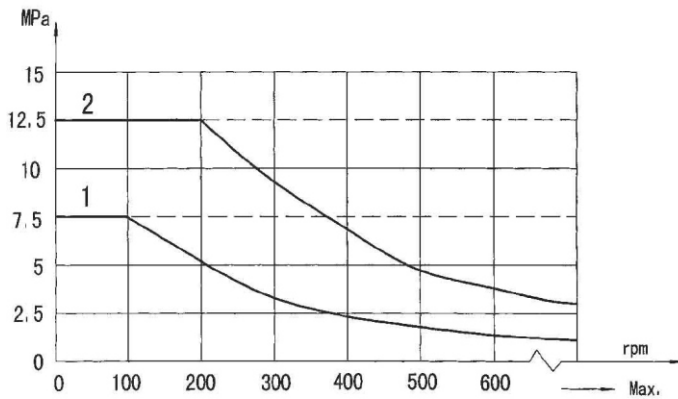
BMS Series Hydraulic Motor

输出轴密封圈允许承受的压力

Permissible shaft seal pressure



马达原理图
motor illustrative diagram



注: 1. 标准轴封允许承受的压力图; Note:1.Chart for standard shaft seal;
2. 高压轴封允许承受的压力图。 2.Chart for high pressure shaft seal.

在不接外泄油管的使用中, 输出轴上的旋转骨架轴封的压力微高于回油管路中的压力。

当接外泄油管的使用中, 输出轴上的旋转骨架轴封的压力等于于外泄油管中的压力。

In applications without drain line, output shaft seal exceeds a bit of the pressure in the return line. When applications use the drain line, the pressure of output shaft seal equals the pressure in drain line.

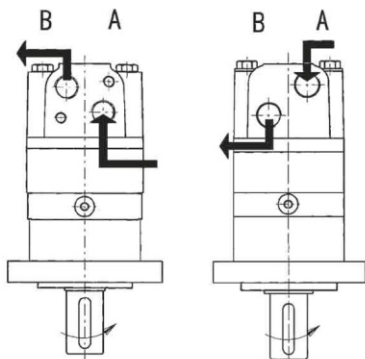
输出轴的旋转方向: 标准

Standard direction of shaft rotation: Standard

当面对马达轴伸方向, A油口为高压油时, 输出轴顺时针方向旋转; 反之, 则逆时针方向旋转。

When facing shaft end of motor, shaft to rotate: Clockwise when port "A" is pressurized.

Counter-clockwise port "B" is pressurized.



外泄油口的外泄流量

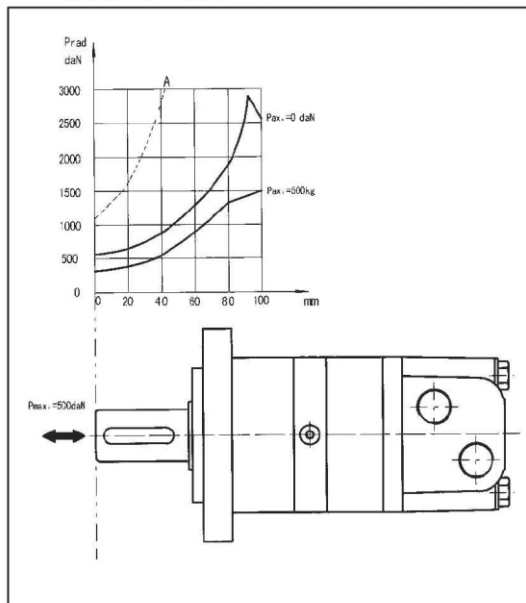
下表所列标准配置马达当外泄回油管压力低于0.5至1Mpa下外泄油口最大外泄流量

Oil leakage flow of drain port

The table below shows the Standard configured motor's maximum oil leakage flow of drain port when the drain return line pressure is lower than 0.5 to 1 mpa

工作压差 Operating pressure difference (Mpa)	油液运动粘度 Oil movement viscosity (mm ² /S)	外泄油口外泄流量 Leakage flow of drain port (L/min.)
10	20	2.5
	35	1.8
14	20	3.5
	35	2.8

轴向力、径向力 Axial and Radial forces

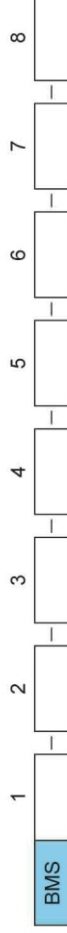


曲线A为最大径向力负荷, 推荐用户在保证轴承寿命B10 (在200rpm. 30000小时运转下), 可使用粗线以下轴向、径向负荷。

The output shaft runs in tapered bearings that permit high axial and radial forces, Curve "A" shows max radial shaft load, Any shaft loads exceeding the values quoted in the curve will involve a risk of breakage. The two other curves apply to a B10 bearing life of 3000 hours at 200 RPM.



订货信息



Pos.1	2	3	4	5	6	7	8
结构代码	排量	安装法兰、止口	输出轴	油口、外泄油口	旋向工况	油漆	特殊功能
无	E2 80 E4 100 F6 125 160 W 200 E2B 250 315 400 SP 475 E6	2-Ø13.5 菱法兰 Ø106.4, 止口 Ø82.5x6.3 4-Ø13.5 菱法兰 Ø106.4, 止口 Ø82.5x6.3 6-Ø13.5 菱法兰 Ø106.4, 止口 Ø82.5x2.6 4-Ø13.5 车轮法兰 Ø160, 止口 Ø125x8 2-Ø14.3 菱法兰 Ø146.05, 止口 Ø101.6x9.4 4-Ø11.5 正方法兰 Ø106.4, 止口 Ø82.5x6.3 4-Ø13.5 菱法兰 Ø106.4, 止口 Ø82.5x6.3	A Ø25轴, 平键 8x7x32 B Ø32轴, 平键 10x8x45 D Ø25.4轴, 平键 6.35x6.35x25.4 G Ø31.75轴, 平键 7.96x7.96x31.75 F Ø31.75轴, 花键 14-DP12/24 FD Ø31.75轴, 花键 14-DP12/24 SL Ø34.85轴, 花键 6-34.85x28.14x8.64 T1 Ø35轴, 平键 B6x6x20 T3 Ø31.75轴, 平键 7.96x7.96x31.75 S1 Ø25.4轴, 花轴 SAE 6B I Ø22 轴, 花轴 13-DP16/32	D G1/2 板式M10, G1/4 M M22x1.5 板式M10, M14x1.5 S 7/8-14UNF O-ring 板式2-3/8-16, 7/16-20UNF P 1/2-14NPTF 板式2-3/8-16UNC, 7/16-20UNF	无 标准 反向 R	00 不油漆 无 蓝漆 B 黑漆 S 银灰漆	无 常规 F 自由转动 LS 低转速

Pos.1	2	3	4	5	6	7	8
结构代码	排量	安装法兰、止口	输出轴	油口、外泄油口	旋向工况	油漆	特殊功能
无	E2 80 E4 100 E6 125 160 W 200 E2B 250 315 400 WE 475	2-Ø13.5 菱法兰 Ø106.4, 止口 Ø82.5x6.3 4-Ø13.5 菱法兰 Ø106.4, 止口 Ø82.5x6.3 6-Ø13.5 菱法兰 Ø106.4, 止口 Ø82.5x6.3 2-Ø14.3 菱法兰 Ø146.05, 止口 Ø101.6x9.4 4-Ø13.6 车轮法兰 Ø147.6, 止口 Ø107.95x6.4	A Ø25轴, 平键 8x7x32 B Ø32轴, 平键 10x8x45 K Ø25.4轴, 平键 6.35x6.35x25.4 G Ø31.75轴, 平键 7.96x7.96x31.75 F Ø31.75轴, 花键 14-DP12/24 FE Ø31.75轴, 花键 14-DP12/24 T4 Ø31.75轴, 平键 7.96x7.96x25.4 S1 Ø25.4轴, 花轴 SAE 6B I Ø22 轴, 花轴 13-DP16/32	EE-D G1/2, G1/4 EE-M2 M22x1.5, M14x1.5 EE-S2 7/8-14UNF O-ring, 7/16-20UNF ED 1-1/16-12UN O-ring, 7/16-20UNF DB G1/2, G1/4 DU G1/2, 7/16-20 UNF SB 7/8-14UNF O-ring, G1/4 SU 7/8-14UNF O-ring, 7/16-20 UNF M4 M22x1.5, M14x1.5 MU 1/2", 5/8" 板式安装 3/8x16UNC, 7/16-20UNF MM 1/2", 5/8" 板式安装 3xM10, G1/4 G G1/2, G1/4 M2 M22x1.5, M14x1.5 S2 7/8-14UNF O-ring, 7/16-20 UNF	无 标准 反向 R	00 不油漆 无 蓝漆 B 黑漆 S 银灰漆	无 常规 F 自由转动 LS 低转速

注: 用户在使用订货信息时, 将马达结构、排量、安装法兰、轴伸、进出油口等信息, 选择右面作色部位的代号按上面格式写给我们即可。其中SP配的轴型为T1、D、B、F、G, WE法兰配的轴型为T4、B、FE、G 有特殊代码, 需提供方案图。若所选规格不在上述表中或特殊要求, 请与我们联系。

Order Information

1 - 2 - 3 - 4 - 5 - 6 - 7 - 8

BMS

Pos.1	2	3	4	5	6	7	8
Code	Disp.	Flange	Output Shaft	Port and Drain Port	Rotation Direction	Paint	Unusually Function
			B Shaft Ø 32 , parallel key 10x8x45 Shaft Ø 25.4, parallel key 6.35x6.35x25.4 D Shaft Ø 31.75, parallel key 7.96x7.96x31.75 G Shaft Ø 31.75, splined key 14-DP12/24 F Shaft Ø 31.75, Long Shaft Ø 31.75, splined key 14-DP12/24 FD Long Shaft Ø 31.75, splined key 14-DP12/24 SL shaft Ø 34.85, Splined key 6-34.85x28.14x8.64 T1 Cone-shaft Ø 35, parallel key B6x6x20 T3 Cone-shaft Ø 31.75, parallel key 7.96x7.96x31.75 S1 Shaft Ø 25.4 , splined key SAE 6B I Sub-shaft Ø 22, splined key 13-DP16/32	D G1/2 Manifold Mount 2-M10, G1/4 M M22x1.5 Manifold Mount 2-M10, M14x1.5 S 7/8-14UNF O-ring manifold 2-3/8-16, 7/16-20UNF P 1/2-14NPTF manifold 2-3/8-16UNC, 7/16-20UNF	Omit Standard R Opposite	00 No paint Omit Blue B Black S Silver gray	Omit Standard F Free Running LS Low Speed
Omit							

Pos.1	2	3	4	5	6	7	8
Code	Disp.	Flange	Output Shaft	Port and Drain Port	Rotation Direction	Paint	Unusually Function
			A Shaft Ø 25 , parallel key 8x7x32 B Shaft Ø 32 , parallel key 10x8x45 K Shaft Ø 25.4, Woodruff key Ø 25.4x6.35 G Shaft Ø 31.75, parallel key 7.96x7.96x31.75 F Shaft Ø 31.75, splined key 14-DP12/24 FE Shaft Ø 31.75, splined key 14-DP12/24 T4 Cone-shaft Ø 31.75, parallel key 7.96x7.96x25.4 S1 Shaft Ø 25.4 , splined key SAE 6B I Sub-shaft Ø 21.74, splined key 13-DP16/32	EE-D G1/2, G1/4 EE-M 2M22x1.5, M14x1.5 EE-S2 7/8-14UNF O-ring, 7/16-20 UNF ED 1-1/16-12UN O-ring, 7/16-20 UNF DB G1/2, G1/4 DU G1/2, 7/16-20 UNF SB 7/8-14UNF O-ring, G1/4 SU 7/8-14UNF O-ring, 7/16-20 UNF M4 M22x1.5, M14x1.5 MU 1/2", 5/8" Crosshole Manifold 3x3/8-16UNC, 7/16-20UNF MM 1/2", 5/8" Crosshole Manifold 3xM10, G1/4 G G1/2, G1/4 M2 M22x1.5, M14x1.5 S2 7/8-14UNF O-ring, 7/16-20 UNF	Omit Standard R Opposite	00 No paint Omit Blue B Black S Silver gray	Omit Standard F Free Running LS Low Speed
Omit							

Note: When the table is used, please fill the code of left rows in the table and give us, which the code information is consists of construction, displacement, mounting flange, output shaft and ports. The informations of mounting flange, output shaft and fronts are the same as BMS series. The SP flange afflies to shafts of T1, D, B, F, G. If the specification is not in the table or you have specific requirements, please contact us.

