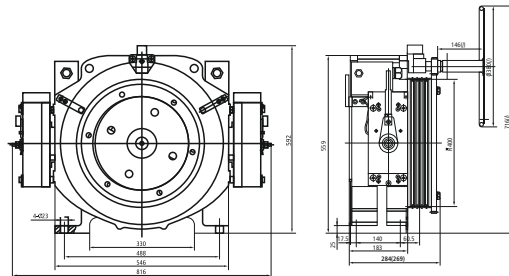


GETM3.0H (630kg)

Overall Dimensions



Max. axle load	2000kg
Motor weight	308kg
Working duty	S5-40%ED
Protection class	IP 40



Specification table

Product type	Traction ratio	Load (kg)	Elevator speed (m/s)	Ramp speed (m/s)	Axle input (N.m)	Motor				Brake			Shaft					
						Power (kW)	Voltage (V)	Current (A)	Poles (p)	Frequency (Hz)	Current (A)	Voltage (V)	Shaft input (N.m)	Shaft diameter (mm)	Shaft length (mm)	Shaft diameter (mm)	Shaft length (mm)	
GETM3.0H-100/0630	2:1	630	1.0	95.5	412	4.1	340	10.0	16	25.4	2x1.2	Dc110	2x515	400	4xø10	95°	35°	15
GETM3.0H-160/0630			1.6	143	412	7.2		16.5										

Remarks:

- Both hand wind and hand wind-less types are available.
- The data in the bracket is for the size of hand wind-less type.
- Remote release device is available, the length of releasing wire ranges 4-10m.

