



197 SERIES PUMPS AND MOTORS

MEDIUM/SMALL DISPLACEMENT SLEEVE BUSHING PUMPS AND MOTORS



**P197 SERIES TANDEM
DUAL INLET/OUTLET**

197 SERIES FEATURES

- ❑ Heavy duty sleeve bushing design in a medium/small frame size
- ❑ Cubic inch displacements from .99 through 3.94
- ❑ Working pressure up to 4000 PSI
- ❑ Speeds up to 2400 RPM
- ❑ Flows up to 40 GPM
- ❑ Doweled and high strength cast iron construction
- ❑ 100% factory tested
- ❑ High strength alloy steel gear and shaft sets
- ❑ A wide range of porting, mounting, and shaft options available
- ❑ Pressure balanced wear plates maintain high pump efficiency throughout all operating ranges
- ❑ Both single inlet/single outlet and single inlet/dual outlet bearing carriers available



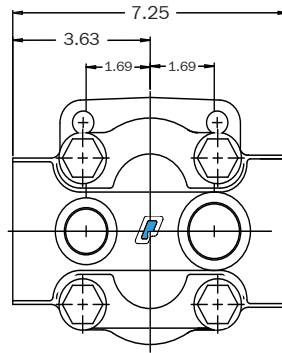
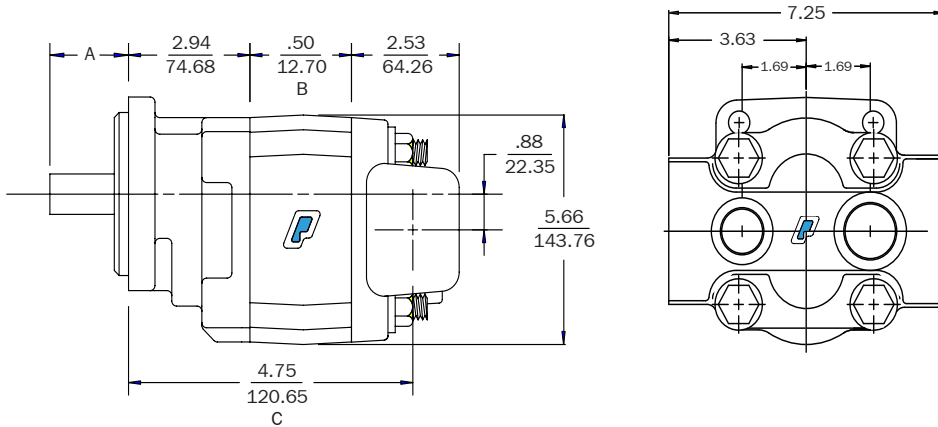
P197 SERIES SINGLE



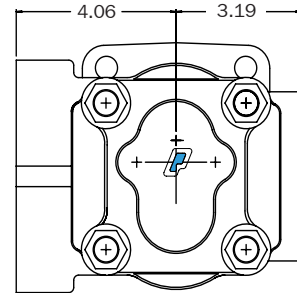
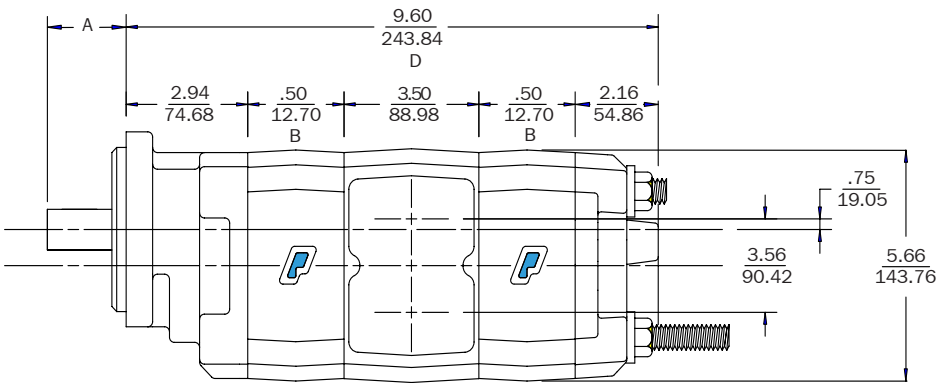
The Sensible Choice



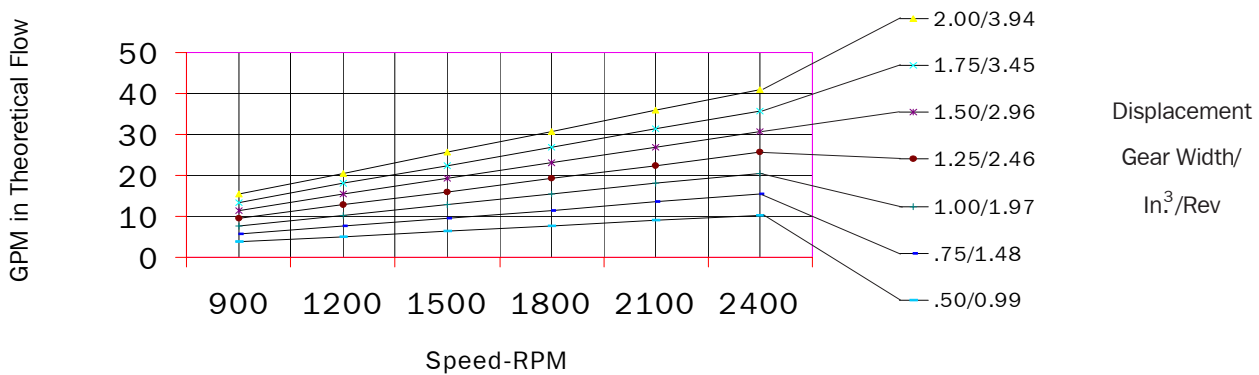
Dimensional Data (inches)



- A. See bushing series catalog for lengths and dimensions
- B. 0.50" plus gear width
- C. 4.75" plus gear width
- D. 9.60" plus total gear width



P197 Performance Chart/Specifications



| GEAR WIDTH (IN) | DISPL CU IN/CC | MAX RPM | MIN RPM | MAX PSI/BAR |
|-----------------|----------------|---------|---------|-------------|
| 0.50 | 0.99/16 | 2400 | 600 | ** |
| 0.75 | 1.48/24 | 2400 | 600 | ** |
| 1.00 | 1.97/32 | 2400 | 600 | 4000/276 |
| 1.25 | 2.46/40 | 2400 | 600 | 4000/276 |
| 1.50 | 2.96/48 | 2400 | 600 | 3750/259 |
| 1.75 | 3.45/57 | 2400 | 600 | 3500/250 |
| 2.00 | 3.94/65 | 2400 | 600 | 3250/224 |

** Consult Factory